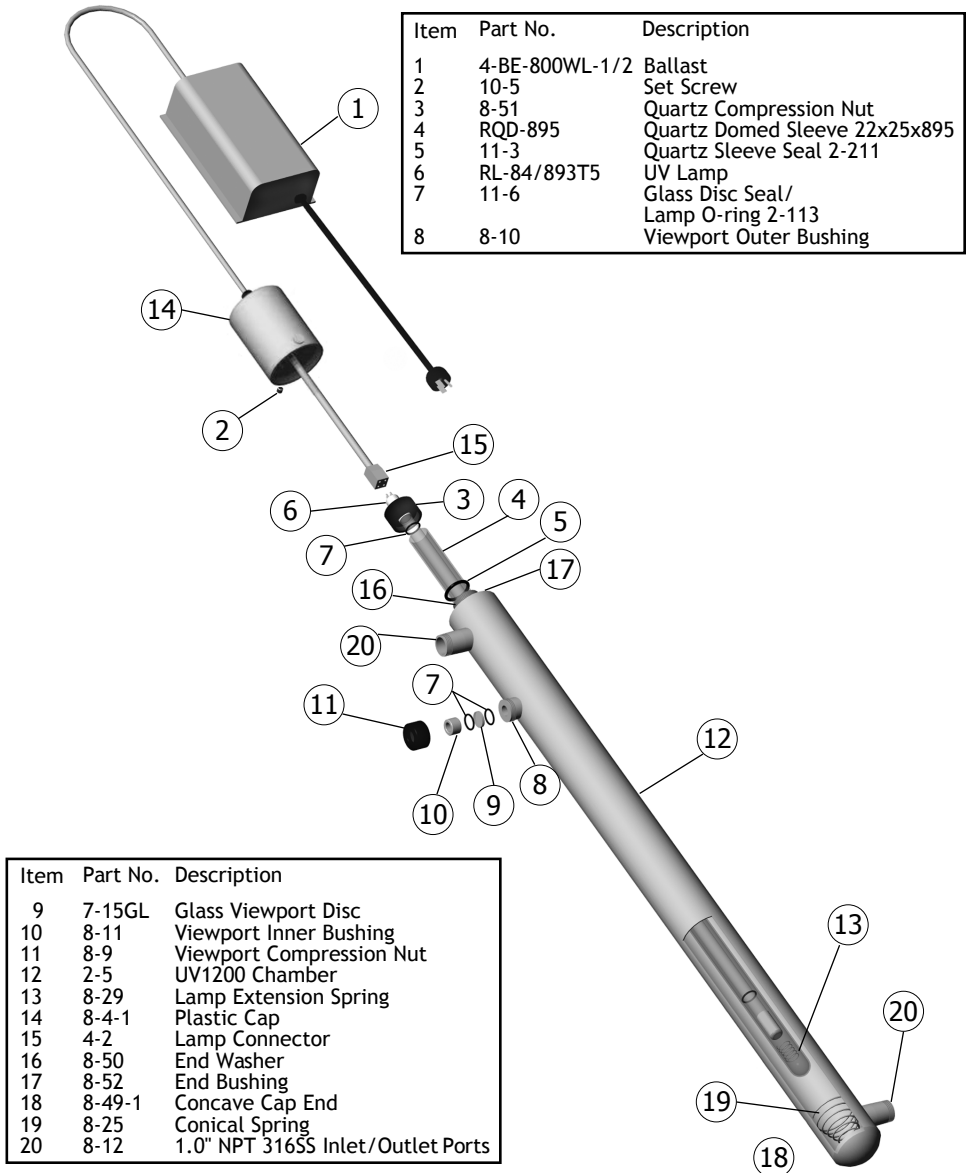


UV Purification Systems

UV-1200

Technical Info

Exploded Diagram & Parts List



Item	Part No.	Description
1	4-BE-800WL-1/2	Ballast
2	10-5	Set Screw
3	8-51	Quartz Compression Nut
4	RQD-895	Quartz Domed Sleeve 22x25x895
5	11-3	Quartz Sleeve Seal 2-211
6	RL-84/893T5	UV Lamp
7	11-6	Glass Disc Seal/ Lamp O-ring 2-113
8	8-10	Viewport Outer Bushing

Item	Part No.	Description
9	7-15GL	Glass Viewport Disc
10	8-11	Viewpoint Inner Bushing
11	8-9	Viewpoint Compression Nut
12	2-5	UV1200 Chamber
13	8-29	Lamp Extension Spring
14	8-4-1	Plastic Cap
15	4-2	Lamp Connector
16	8-50	End Washer
17	8-52	End Bushing
18	8-49-1	Concave Cap End
19	8-25	Conical Spring
20	8-12	1.0" NPT 316SS Inlet/Outlet Ports