

Installation and Maintenance Manual

Models:

UV-1, UV-250,
UV-700, UV-1200, UV-1500,
UV-3000, and UV-5000



Wyckomar

UV Purification Systems

CAUTION - WARNING

The ballast and all electrical connections **MUST** be mounted and installed above the water lines to prevent the possibility of electrical shock in case of a water leak.

See "Preparing to Install your System" on page 4

Read this entire User Manual before attempting to install your UV system

Read and follow ALL safety precautions

Keep this Manual in a safe place for future reference

Unit Serial Number: _____

Date of Purchase: _____

Please keep your sales receipt as proof of purchase



How to use this manual

Congratulations on purchasing a Wyckomar UV purification system. Please read through the installation procedures and follow all safety warnings when setting up your system.

Wyckomar Inc. manufactures several sizes of UV purification systems; however, they all operate on the same principle. Basic installation is the same for most units. Refer to the exploded diagrams for replacement parts.

Table of Contents

Section 1	Introduction Table of Contents	Page 1
	How Ultraviolet water purification works	Page 2
	How your Wyckomar UV Water Purifier works	Page 3
Section 2	Setting up your Wyckomar UV Water Purifier	Page 4
	Preparing to install your system Safety Precautions	Page 4
	Important Considerations	Page 5
	Typical Installation	Page 6
	Disinfecting Your Water System	Page 10
	Maintenance - Replacing UV Lamp and Quartz	Page 11
Section 3	Standard Units - Exploded Views	Page 14
Section 4	Accessory Products	Page 21
	Filter Sets and Cartridges	Page 24
	UV Monitor	Page 24
Section 5	Contact Information	Page 28
	Wyckomar contact info	Page 30
	Warranty Registration Card	Page 30
		Page 31

Copyright

Copyright by Wyckomar Inc. 2005. No part of this manual may be reproduced or transmitted in any form without the expressed, written permission of Wyckomar Inc.

Notice

Although Wyckomar has attempted to ensure the accuracy of the content of this manual, it is possible that this document may contain technical inaccuracies, typographical, or other errors. Wyckomar assumes no liability for any error in this publication, and for damages, whether direct, indirect, incidental, consequential or otherwise.

Wyckomar provides this publication "as is" without warranty of any kind, either express or implied, but not limited to implied warranties of merchantability or fitness for any particular purpose.

The published information in the manual is subject to change without notice. Wyckomar reserves the right to make changes in the product design and layout without notification to its customers.



How Ultraviolet Water Purification Works

Wyckomar Ultraviolet (UV) Purifiers utilize the proven principle of ultraviolet light radiation to eliminate or reduce unacceptable levels of microorganisms in water and other liquids. Ultraviolet light energy destroys bacteria, viruses, fungi, spores, algae and other such contaminants, which are pathogenic to humans, other animals and plants. Ultraviolet purification is a completely natural, non-chemical, environmentally safe technique, which adds nothing to, and removes nothing from (such as trace minerals) the water.

Factors affecting UV Purification

The Wyckomar UV Purifier is guaranteed to eliminate microbiological contamination only if the physical qualities of the influent water supply are as follows:

Turbidity (Suspended Solids): Turbidity must be < 1.0 TU at the time of disinfection. There must be a 5-micron or less sediment prefiltration system installed before the UV system.

Total Hardness (Sum of Calcium & Magnesium): Must be < 10 gpg (grains/gallon) of hardness before pretreatment is required.

Tannins & Colour: There must be < 2.0 ppm before pretreatment is required.

Iron: Must be < 0.3 ppm.

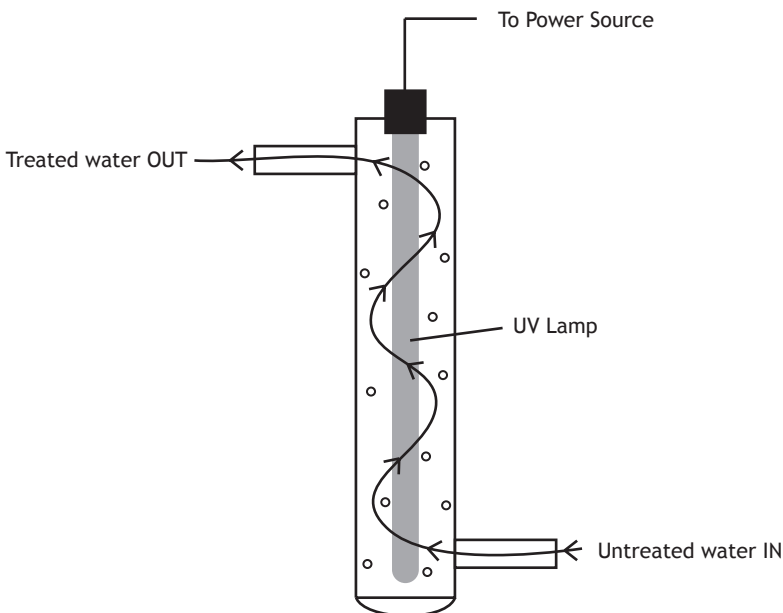
Manganese: Must be < 0.05 ppm.

If your water quality parameters do not meet these criteria, please contact the manufacturer for pretreatment recommendations.



How your Wyckomar UV Water Purifier Works

Untreated water enters the lower portion of the purification chamber and flows through the unit in an upward circular path. The spiraling movement assures the maximum irradiation of the fluid and prevents larger particles from blocking the treatment of microorganisms. The purification chamber contains the ultraviolet light-producing lamp. In operation, the lamp emits a bluish glow, which is visible in the view port window on the side of some units. **WARNING: DO NOT LOOK AT THE UV LIGHT DIRECTLY.** If your unit does not have a view port, operation of the UV light is confirmed by a green LED indicator lamp. As long as the appropriate indicators are glowing, the unit is working properly. An alarm will sound when the UV lamp is not functioning. When the the alarm is sounding, the lamp must be replaced for the unit to operate properly.





Preparing to install your system



SAFETY PRECAUTIONS

READ and FOLLOW all safety precautions. SAVE these instructions.

Never Expose your eyes directly to UV light

This UV system is designed for indoor use only. Do Not use this UV system where it may be exposed to the elements. Protect the unit from freezing at all times.

ELECTRIC SHOCK HAZARD This UV system is installed near water - take all necessary precautions. Other than where noted in this manual, **DO NOT** attempt repairs yourself but contact the factory or authorized dealer for repair service.

Only connect this UV system to a properly grounded outlet. A GFCI circuit is recommended. Installation of a quality surge suppressor is highly recommended.

Ensure installation is in compliance with all local laws, regulations and codes.

DO NOT operate the UV system is power cord, plug or any component appears to be damaged or if the unit has been dropped or damaged in any way. Inspect the UV system after installation. **DO NOT** plug in the system if there is water on any part(s) that are not intended to be wet.

This system system is to be used **ONLY** for its intended use of potable water disinfection. **DO NOT** use attachments not approved by the manufacturer as this may cause problems with the UV system.



Preparing to install your system

IMPORTANT CONSIDERATIONS

Ensure there is adequate clearance at the lamp end of the unit in order to safely remove the UV lamp from the chamber. Space required is at least the length of the UV chamber.

If a water softener or other treatment device is installed or planned for, your UV unit should be located closet to the faucet (ie last in the treatment chain). Refer to Typical Installation diagram.

Use Teflon tape liberally on all pipe connections.
DO NOT use any other sealant!

This UV system is designed to be installed vertically and works best when installed in this position. Electrical connection end **MUST** be at the top. Unit may be installed horizontally if absolutely necessary. Ensure ballast unit is installed above water line to prevent electrical hazard.

In order to ensure proper UV disinfection, all systems must have a 5 micron sediment filter in front of the UV unit. Standard Wyckomar filter sets include a 5 micron sediment filter and a carbon filter to remove additional contaminants.



Wyckomar

UV Purification Systems

INTRODUCTION

SETTING UP

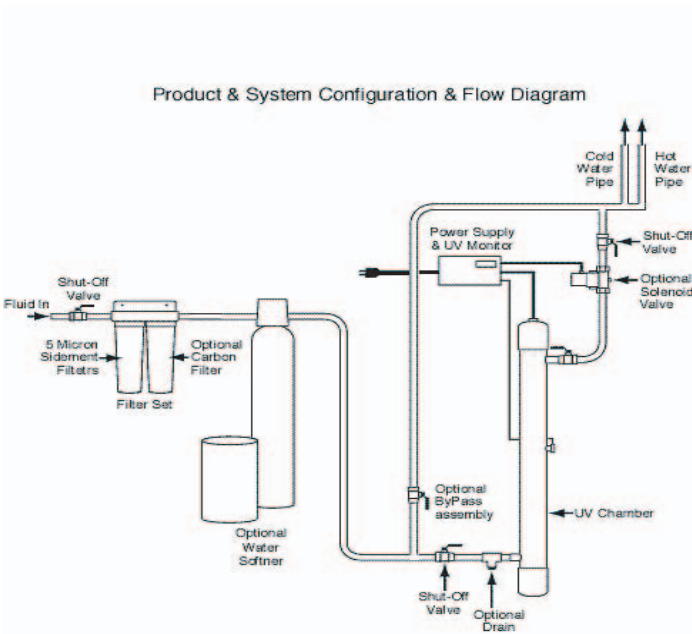
STANDARD SYSTEMS

ACCESSORIES

CONTACT INFO



Typical Installation (Preparing to install)



Note the location and layout of a typical UV system installation



Wyckomar

UV Purification Systems



Typical Installation (preparing to install)



Installing Pre-Filter set



Installing the UV unit



Completed Installation with Pre-Filter set and UV

INTRODUCTION

SETTING UP

STANDARD SYSTEMS

ACCESSORIES

CONTACT INFO



Preparing to install your system

1

Wyckomar purifiers are designed to be installed either at the main water supply line or at point of use. In some installations, particularly where plumbing is old, the water may become re-contaminated in the pipes between the purifier and the faucet. In such cases, be sure to follow instructions under "Disinfecting Your Water

2

Wyckomar purifiers are designed to be installed vertically and work best when mounted in this position. However, in cases with space restrictions, the unit may be mounted horizontally. **Important: Clearance above the unit for lamp changes should be equal to the length of the purifier.**



Caution: The ballast and all electrical connections **must** be mounted and installed above water lines to prevent the possibility of electric shock in the case of a water leak. A grounded electrical outlet is required (GCFI is preferred).

3

The manufacturer's warranty is only applicable when prefiltered water is used. Prefilters (to 5 micron) remove sediment particles that reduce the effectiveness of the UV lamp or potentially damage the unit.

4

If a water softener or other treatment device is installed or planned for, your purifier should be located closest to the faucet.

5

Install your Wyckomar purifier indoors in a protected area. The temperature should not fall below 4 deg. C (40 deg. F) and avoid conditions with high humidity to prevent condensation on the purification chamber. Ideal temperature conditions range from 9 deg. C to 29 deg. C.

6

Use Teflon tape liberally on all pipe connections that thread into plastic. Do not use any other sealants!



Installation and Operation

- 1** Note the direction of water flow in the supply line to which the unit is being connected.
- 2** Refer to the appropriate exploded diagram for your unit and check to see that you have all the necessary fittings.

Parts List: 4 screws 1 Allen key wrench
 1 alcohol wipe 1 quartz dome or sleeve
 1 UV lamp w/ o-rings on each end
- 3** Take the plastic cap off the unit and remove the black nut from the end of the unit. Gently slide the quartz dome with the lamp into unit. **Do not put fingerprints on glass.**
- 4** Be sure the black o-ring is secure inside the black nut when you screw it back onto the end of the unit to seal it. Turn nut until snug. **IMPORTANT Do not over-tighten.**
- 5** Connect the white 4-pin electrical connector. Replace the plastic cap and gently tighten setscrews with the Allen key wrench supplied. Unit is now ready to install.
- 6** Shut off the main water supply valve. Fasten unit to wall in using the white clips and screws provided.
- 7** Install new plumbing if you are installing a solenoid valve or pre-filters make sure the arrows on the filter set points in the direction of water flow.
- 8** When new plumbing is installed, a seal should be attached to the closed by-pass (if installed). This seal should not be broken unless water is required during emergency or shutdown periods. See "Disinfecting Your Water System".
- 9** Plug power into an appropriate power source outlet (**a power surge suppressor is strongly recommended**).
- 10** Open main valve to water source. Open valve on either side of purifier (by-pass valve should remain closed). You should hear a rush of water entering the unit. Turn on any faucet to start the flow of water through the unit.



Disinfecting your water system

After installing the UV unit, your water system must be disinfected beyond the UV unit itself. The following steps must be taken to accomplish this important task.

- 1** Turn off the water supply to the UV unit and make sure that the by-pass valve is closed. Turn on the UV unit.
- 2** Remove the filters bowls from the filter housing head and remove the filter cartridges.
- 3** Fill the filters bowls one-half full with chlorine bleach and screw the bowls back onto the filter housing head.
- 4** Turn on the water supply.
- 5** Turn on every tap in the water system of the building both inside and outside. Run the water until the smell of chlorine is evident in the farthest tap. At this time, shut off the taps and let the system sit idle for 60 minutes.
- 6** While the UV lamp remains on, open all taps in the water system to flush out the chlorine - approximately 15 minutes.
- 7** When all chlorine is flushed from the system, and while **the UV lamp remains on**, shut off the water supply and reinstall the filter cartridges in the filter housings.
- 8** Turn on the water supply. Test water for containinants.
- 9** **WARNING**
This Simple Procedure must be performed after installation of the UV system, and whenever the UV system is shut down or inoperative for any reason whatsoever.



Maintenance Procedures

Ultraviolet Lamp Replacement

The UV lamp located in the purification chamber will operate effectively for approximately 1 year under normal conditions. The lamp will still light after that period, but maximum UV light penetration may fall below the prescribed safety level.



Caution: It is required that the lamp be changed every 12 months after installation regardless of apparent condition of the lamp.

- 1** Unplug the purifier from the electrical outlet. Note: It is not necessary to turn off the water supply.
- 2** With the Allen key provided, loosen the two set screws that secure the top cap containing the electrical cord. Remove the cap and carefully set aside.
- 3** Remove the lamp connector located at the cord end of the lamp by gently wiggling and pulling away from the
- 4** Carefully slide the UV lamp out of the quartz sleeve and discard.
- 5** Insert the replacement lamp into the quartz sleeve. Do not touch the lamp with your hands - fingerprints will prevent the system from working properly. If the lamp is touched, clean with an alcohol wipe.
- 6** Gently push the lamp connector against the pins at the end of the new lamp.
- 7** Make sure that all electrical components are dry before replacing the top cap. Secure the cap with the setscrews.
- 8** Plug in the power cord. The lamp should be operating at this time. To confirm that your new lamp is working correctly, check your model's light indicator.



Maintenance Procedures

Cleaning and replacing the Quartz Dome/Sleeve



Important: If water turbidity is a problem, it is advisable to clean the quartz sleeve when replacing the lamp.

- 1** Turn off the water supply and unplug the purifier from the electrical outlet.
- 2** With the Allen key provided, loosen the two set screws that secure the top cap containing the electrical cord. Remove the cap and carefully set aside.
- 3** Remove the white lamp pin connector from lamp end. Remove the UV lamp carefully from the UV unit.
- 4** Loosen and remove the retaining nut. Caution: Quartz sleeve will be stuck to the o-ring inside the retaining nut.
- 5** Carefully remove the quartz sleeve from the UV chamber.
- 6** Wipe the quartz sleeve with an alcohol wipe being careful not to touch the sleeve with your fingers.
- 7** Reassemble using a clean cloth to hold the quartz sleeve. Guide the quartz sleeve gently into the UV chamber and screw the retaining nut down until snug to secure seal.
- 8** Insert the replacement lamp into the quartz sleeve. Gently push the lamp pin connector against the pins at the end of the lamp.
- 9** Complete the reassembly of the UV purifier.



Troubleshooting Guide

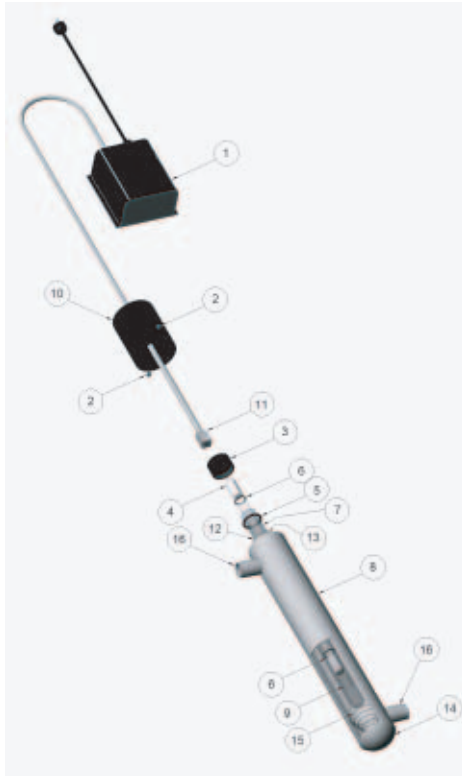
Trouble	Cause	Solution
UV Lamp will not light	Input voltage below or above 120 volts	Install a voltage regulator
	Line cord disconnected or outlet defective	Check or replace
UV Lamp will not light	Breaker/fuse has blown	Check or replace
	Defective UV Lamp	Replace
	Defective Lamp Ballast	Check that indicator light is on Check output voltage Check that white lamp end connector is secure on lamp pins
Leak at quartz sleeve	Defective or cracked o-ring	Replace o-ring
	O-ring not seated properly	Replace o-ring
	Quartz fracture	Replace quartz sleeve

If problem persists, call Wyckomar Inc. for technical assistance.
1.800.419.5162 or 519.822.1886



UV-1

Exploded diagram & Parts List



Item No.	Part No.	Description
1	4-BE-425WP-1	Ballast
2	10-5	Set Screw
3	8-51	Quartz Compression Nut
4	RL-12/254T5	Lamp RL-84/893T5
5	11-3	Quartz Sleeve Seal 2-211
6	11-6	Quartz Disc Seal/Lamp O-ring 2-113
7	RQD-269	Quartz Dome Sleeve 22X25X269
8	8-2 1/2 304-9	UV1 Chamber
9	8-29-1	Lamp Extension Spring
10	8-4-1	Plastic Cap
11	4-2	Lamp Connector
12	8-50	End Washer
13	8-52	End Bushing
14	8-49-1	Concave Cap End
15	8-25	Conical Spring
16	8-11	1/4" NPT 304SS inlet/outlet Port

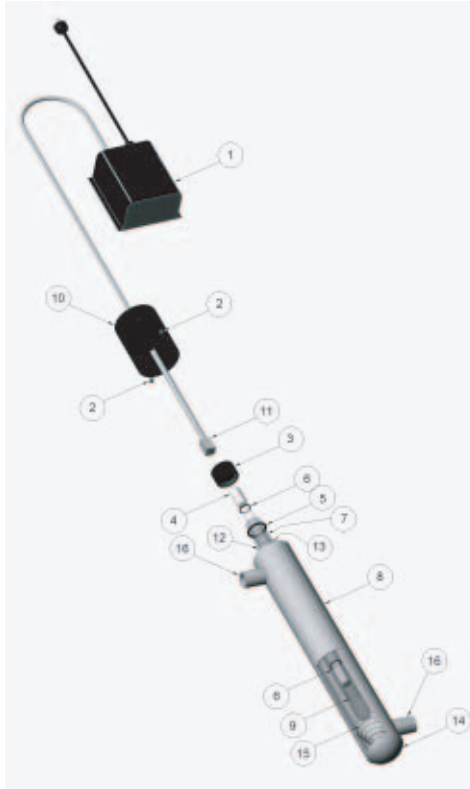


Wyckomar

UV Purification Systems

UV-250

Exploded diagram & Parts List



INTRODUCTION

SETTING UP

STANDARD SYSTEMS

ACCESSORIES

CONTACT INFO

Item No.	Part No.	Description
1	4-BM-425-1	Articool Ballast
2	10-5	Set Screw
3	8-51	Quartz Compression Nut
4	RL-23/436T5	Lamp RL-23/436T5
5	11-3	Quartz Sleeve Seal 2-211
6	11-6	Quartz Disc Seal/Lamp O-ring 2-113
7	RQD-438	Quartz Dome sleeve 22x25x438
8	8-2 1/2 316 CTS 16.5	UV250 Chamber
9	8-29-1	Lamp Extension Spring
10	8-4-1	Plastic Cap
11	4-2	Lamp Connector
12	8-50	End Washer
13	8-52	End Bushing
14	8-49-1	Concave Cap End
15	8-25	Conical Spring
16	8-5	3/4" NPT 304SS inlet/outlet Port

UV-700

Exploded diagram & Parts List



Item No.	Part No.	Description
1	4-BE-425-1	Articool Ballast
2	10-5	Set Screw
3	8-51	Quartz Compression Nut
4	RQD-895	Quartz Domed Sleeve 22x25x895
5	11-3	Quartz Sleeve Seal 2-211
6	RL-40/867T5	Lamp RL-40/867T5
7	11-6	Glass Disc Seal/Lamp O-ring 2-113
8	8-10	Viewport Outer Bushing
9	7-15GL	Glass Viewport Disc
10	8-11	Viewport Inner Bushing
11	8-9	Viewport Compression Nut
12	8-2-1/2	UV700 Chamber
13	8-29	Lamp Extension Spring
14	8-4-1	Plastic Cap
15	4-2	Lamp Connector
16	8-50	End Washer
17	8-52	End Bushing
18	8-49-1	Concave Cap End
19	8-25	Conical Spring
20	8-5	3/4" NPT 304SS inlet/outlet port

INTRODUCTION

SETTING UP

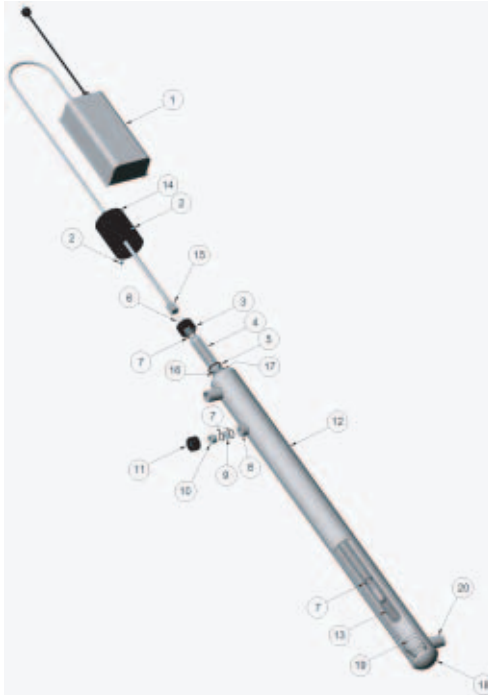
STANDARD SYSTEMS

ACCESSORIES

CONTACT INFO

UV-1200

Exploded diagram & Parts List

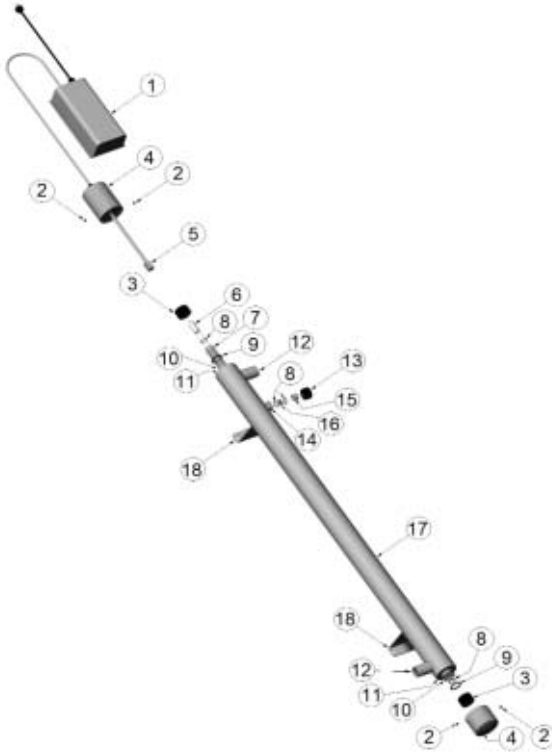


Item No.	Part No.	Description
1	BE-800L-1	Articool Ballast
2	10-5	Set Screw
3	8-51	Quartz Compression Nut
4	RQD-895	Quartz Domed Sleeve 22x25x895
5	11-3	Quartz Sleeve Seal 2-211
6	RL-84/893T5	Lamp RL-84/893T5
7	11-6	Glass Disc Seal/Lamp O-ring 2-113
8	8-10	Viewport Outer Bushing
9	7-15GL	Glass Viewport Disc
10	8-11	Viewport Inner Bushing
11	8-9	Viewport Compression Nut
12	8-2-1/2	UV1200 Chamber
13	8-29	Lamp Extension Spring
14	8-4-1	Plastic Cap
15	4-2	Lamp Connector
16	8-50	End Washer
17	8-52	End Bushing
18	8-49-1	Concave Cap End
19	8-25	Conical Spring
20	8-12	1.0" NPT 304SS inlet/outlet port



UV-1500

Exploded Diagram & Parts List



Item No.	Part No.	Description
1	BE-800L-1	Articool Ballast
2	10-5	Set Screw
3	8-53	Quartz Compression Nut
4	8-4-1	Large Blue Cap
5	4-2	Lamp Connector
6	RL-110/1197T5	Lamp RL-110/1197T5
7	RQS-1181	Quart Open Sleeve 22x25x1181
8	11-6	Glass Disc Seal/Lamp O-ring 2-113
9	11-3	Quartz Sleeve Seal 2-211
10	8-52	End Bushing
11	8-50	End Washer
12	8-12	1.0" NPT 316SS Inlet/Outlet Ports
13	8-9	Viewport Copression Nut
14	8-10	Viewport Outer Bushing
15	8-11	Viewport Inner Bushing
16	7-15GL	Glass Viewport Disc
17	8-5 316CTS44	UV1500 Chamber
18	5-2	Mounting Feet

INTRODUCTION

SETTING UP

STANDARD SYSTEMS

ACCESSORIES

CONTACT INFO



Wyckomar

UV Purification Systems

UV-3000

Exploded Diagram & Parts List



Item No.	Part No.	Description
1	4-BE-800L-1	Articool Ballast
2	10-5	Set Screw
3	8-40	Black End Cap
4	8-301	Quartz Compression Nut
5	11-10	Lamp O-ring 19x6
6	RL-100/1197T6	Lamp RL-100/1197T6
7	RQS-1190	Quartz Open Sleeve 32x36x1190
8	11-324	Quart Sleeve Seal 2-324
9	8-30	End Flange
10	8-302	Threaded End Bushing
11	8-28	1-1/2" NPT 316 SS inlet/port port
12	8-10	Viewport Outer Bushing
13	7-15GL	Glass Viewport Disc
14	8-9	Viewport Compression Nut
15	8-23	Mounting Feet
16	11-6	Glass Disc Seal 2-113
17	8-11	Viewport Inner Bushing
18	8-303	UV3000 Chamber
19	4-2	Lamp Connector

INTRODUCTION

SETTING UP

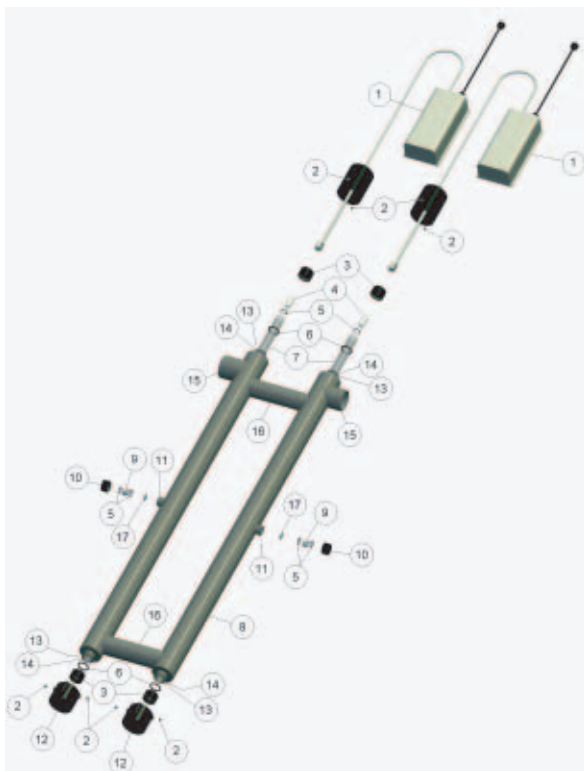
STANDARD SYSTEMS

ACCESSORIES

CONTACT INFO

UV-5000

Exploded Diagram & Parts List



Item No.	Part No.	Description
1	4-BE-800L-1	Articool Ballast
2	10-5	Set Screw
3	8-51	Quartz Compression Nut
4	RL-110/1197T5	Lamp RL-110/1197T5
5	11-6	Quartz Disc Seal/Lamp O-ring 2-113
6	11-3	Quartz Sleeve Seal 2-211
7	RQS-1181	Quartz Open Sleeve 22X25X1181
8	8-5 316 SS CTS44	UV5000 Chamber
9	8-11	Viewport Inner Bushing
10	8-9	Viewport Compression Nut
11	8-10	Viewport Outer Bushing
12	8-4-1	Large Blue Cap
13	8-52	End Bushing
14	8-50	End Washer
15	8-14	2" NPTX1/2" inlet/outlet ports
16	8-2-316 CTS6	Chamber Joiner Tube
17	7-15GL	Glass Viewport Disk

INTRODUCTION

SETTING UP

STANDARD SYSTEMS

ACCESSORIES

CONTACT INFO

Filter Sets

Filter Sets are available in standard 10 inch and 20 inch configurations. We **HIGHLY** recommend a 5 micron sediment and a carbon filter be installed ahead of the UV unit in order to ensure proper UV operation.





Changing Filter Cartridges

- 1** Turn off the water supply to filter.
- 2** Depress pressure release button (if present) to relieve pressure in filter housing. Unscrew housing with spanner wrench.

Note: When opening filter housing, it is common for the O-ring/Gasket to lift out of the housing and stick to cap.

Remove used cartridge and discard. Rinse out housing and fill approximately 1/3 full of water. Add about 2 to 3 teaspoons of bleach and scrub thoroughly with brush or sponge. Rinse thoroughly.
- 3**
- 4** Remove O-ring/Gasket from sump and wipe groove and O-ring clean. Lubricate O-ring/Gasket with a coating of food grade silicone grease. Place O-ring/Gasket back in place and press O-ring down into the groove with fingers (or place gasket on rim of sump).

Note: Make sure O-ring/Gasket is seated level to maintain proper seal. If O-ring/Gasket appears damaged, replace at this time.
- 5** Insert a new cartridge into the sump making sure that it slips down over the sump standpipe.
- 6** Screw the sump onto the cap and handtighten. **DO NOT OVERTIGHTEN!** Make sure that the cartridge slips over the cap standpipe.
- 7** Turn on the water supply slowly to allow housing to fill with water.
- 8** Depress the pressure release button (if present) to release trapped air from the filter.
- 9** Check for leaks before leaving installation.



Filter Maintenance and Troubleshooting



Important: Do not use filter with water that is microbiologically unsafe or of unknown quality without adequate disinfection before or after the unit.

An activated carbon cartridge (Taste/Odour) may contain a small amount of carbon fines (very fine black powder). A new cartridge should be flushed with sufficient water after installation to remove the fines before using the water.

Each time that you use water from your filtered water tap for drinking or cooking purposes, it is recommended that you run the tap for at least 10 seconds prior to using the water. This is important if the water tap is not used daily.

Certain types of harmless bacteria will attack cellulose material. Cartridges containing cellulose may seem to disintegrate, produce a "musty" or "moldy" odour, or form a black precipitate due to the bacteria. If you notice any of the above problems while using the cellulose media cartridges, switch to a synthetic media cartridge or consult the manufacturer.

This replacement cartridge has a limited service life. Changes in taste, colour and flow of the water being filtered are signals that replacement of the cartridge is or soon may be necessary.

CAUTION: The filter must be protected against freezing. Failure to do so may result in cracking of the filter and water leakage.

CAUTION: All filtration systems contain other parts that have a limited service life. Exhaustion of the service life of those parts often cannot be easily detected. Commonly, it is only after leakage has been observed or water damage has occurred that one is made aware that the service life has been exhausted.

UV Purification Systems

INTRODUCTION

SETTING UP

STANDARD SYSTEMS

ACCESSORIES

CONTACT INFO

IMPORTANT NOTICE: To prevent costly repairs or possible water damage, we recommend that the bowl or sump of all plastic housings be replaced periodically: every 5 years for clear sumps, & every 10 years for opaque sumps.



Sediment and Carbon Filter Cartridges are available from the manufacturer.

Be sure to replace filter cartridges on a regular basis to ensure proper operation of your UV disinfection system

UV-Monitor



The optional Wyckomar UV Monitor is designed to monitor the effective UV disinfection light available inside the UV chamber.

The UV Monitor will measure true 254 nm germicidal light in real time and sound an alarm if the system develops a problem. An optional solenoid valve may be connected to the UV monitor to stop the water flow when the system is not functioning properly.

Installation instructions are supplied with the UV Monitor.



UV Purification Systems

INTRODUCTION

SETTING UP

STANDARD SYSTEMS

ACCESSORIES

CONTACT INFO

Please contact the manufacturer or your local dealer for all replacement parts.

Please save this manual for future reference.



Questions?



Contact and Warranty Information

Congratulation on purchasing a Wyckomar UV purification system. We want you to be satisfied with your product and with our service. If you need to contact a Wyckomar Customer Service Representative, please have your product model number and serial number ready.

For warranty service; ship defective product, proof of purchase indicating date of purchase and a letter describing the problem to:

Mail:	Wyckomar Inc. P.O. Box 611 111 Malcolm Road Guelph, Ontario, CANADA N1H 6L3
Telephone:	1.800.419.5162 519.822.1886
Fax:	519.763.6580
Email:	sales@wyckomaruv.com
Web Site:	www.wyckomaruv.com

FOR THIS WARRANTY TO BE EFFECTIVE, WHEN MAKING A WARRANTY CLAIM YOU MUST INCLUDE YOUR PROOF OF PURCHASE RECEIPT INDICATING THE DATE OF PURCHASE.

Wyckomar Inc. warrants to the first purchaser of the UV unit that the UV reactor chamber will be free from faulty material and/or workmanship for a period of 5 years from date of purchase. Ballasts, UV Monitors and UV Lamps carry a one-year pro-rated warranty from date of purchase.

Wyckomar Inc.'s liability during the warranty period is limited to the repair and/or replacement of the part(s), which prove to be defective in material and/or workmanship under normal use. Shipping, handling and service costs are the responsibility of the purchaser. The defective part or unit must be returned to Wyckomar at the purchaser's expense.

The warranty is not transferable and is the only warranty authorized by Wyckomar Inc. Any other warranty or guarantee, implied or offered, will not be honored by Wyckomar Inc.

This warranty is void, if in the opinion of Wyckomar Inc. that the product failure was caused by misuse, abuse, accident or improper installation. Do not install systems out of doors (in the elements). All units are for indoor use only in a dry location.

As a result of this warranty, Wyckomar Inc. is not responsible for any damages, injuries or losses whatsoever, including those incurred during installation, repair or replacement, as well as incidental or consequential damages.

**Warranty Registration Card**

Please fill out your Wyckomar Product Registration Card and return it to the manufacturer. Alternatively, you may email the information to sales@wyckomaruv.com.

Last Name

First Name

Street Address

City

Province/State

Postal Code/Zip

Country

Phone Number

Date of Purchase

email Address

Product Model Number

Product Serial Number

Purchased From

This unit is installed

in a residential building

in a commercial business

on a municipal water supply

on a private well

Wyckomar

means
chemical-free

Wyckomar Inc. has been manufacturing
Chemical-free Ultra Violet
Water Purification and Filtration systems
since 1978.

Currently, we sell our products in more than 25 countries
around the globe. Our products are very friendly to the
environment by reducing or eliminating the need for
chemical-based water disinfection systems.

For information on distribution opportunities including our
internet affiliate network please contact our
sales department.

sales@wyckomaruv.com



 **Wyckomar**
UV PURIFICATION SYSTEMS