



# SYS250-POU

## All-in-One Water Treatment System

### Description

The SYS250-POU is an All-in-One Water Treatment System that is sized for the needs of the average household (up to 3 people) or cottage to provide complete purified drinking water for domestic use. Typically installed at the point of use, it is used for treating municipal water as well as ground water from drilled or dug wells, and surface water from lakes, ponds or rivers. It will purify the water from most contaminants such as sediments, rust and pesticides with filtration down to 5 micron. Carbon filtration reduces taste and odour, including sulphur smell and chlorine residuals, as well as cysts. Harmful microbiological contaminants, such as viruses, bacteria and protozoa are killed with a powerful UV disinfection dose that will inactivate the pathogens at a kill rate of > 99.99% (log4) (*Giardia*, *E. coli*, *Cryptosporidium*, *Vibrio cholerae*, *Legionella*, *Salmonella*, *Shigella*, *Streptococcus* and many others).

This purifier comes equipped with an electronic ballast that features an alarm system which sounds an audible alarm if the UV lamp is not functioning properly.

All components of this system are pressure-tested and pre-assembled on a stainless steel panel. It is easy to install and maintain and can be upgraded with optional components for many different water treatment applications.

This residential water purification system offers very efficient water treatment at a low cost per unit volume.



### Features

- ▶ Chemical-Free Water Treatment
- ▶ Robust Construction, Pre-Assembled
- ▶ 304L SS Ultra-Violet Sterilizer (316L optional)
- ▶ Electronic Ballast with Lamp-Out Alarm
- ▶ 10" SlimLine Filtration in 2 Stages
- ▶ Filter Housings with Pressure Relief Valves
- ▶ Many Optional Components
- ▶ Mounted on Stainless Steel Panel

### Benefits

- ▶ Safe Drinking Water at Low Cost
- ▶ High UV Dose for Peace of Mind
- ▶ Extremely Simple to Use and Maintain
- ▶ Fully Assembled for Easy Installation
- ▶ Ideal for Use in Cottages
- ▶ Made in Canada



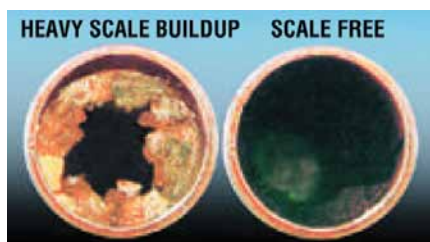
<b>Flow Range (limited by filter selection):</b>	Up to 15 litres per minute (4 GPM) 900 litres/hour, 21.6 m <sup>3</sup> /day (240 gallons/hour, 5760 gallons/day)
<b>Initial UV Dose at Max. Flow (95% UVT):</b>	46 mJ/cm <sup>2</sup> (46,000 µWsec/cm <sup>2</sup> ) @ 15 LPM / 4 GPM
<b>Electrical:</b>	110 Volt AC / 50 - 60 Hz (Part # SYS250-POU-1) 240 Volt AC / 50 - 60 Hz (Part # SYS250-POU-2)
<b>Ballast:</b>	Electronic Ballast w/ Lamp Out Alarm, Power LED, Count of Total Running Days on LCD Display (Resettable) Model RH51-425-40L (Wyckomar Part # 4-BE-425-ECO-R)
<b>Replacement Lamp:</b>	Low-Pressure UV Lamp, Part # RL-23/436T5
<b>Filtration:</b>	10" SlimLine (L 9-3/4", OD 2-1/2"), w/ Pressure Relief
<b>Stage 1, Sediment Filter:</b>	Melt-Blown Polypropylene ("Spun Poly"), 5 Micron
<b>Stage 2, Carbon Filter:</b>	Coconut Shell Carbon ("Extruded Carbon Block") for High Chlorine Reduction
<b>Min/Max. Operating Temperature:</b>	T <sub>min.</sub> = 3 °C (37 °F), T <sub>max.</sub> = 40 °C (104 °F)
<b>Max. Operating Pressure:</b>	125 psi - 8.6 bar
<b>Plumbing:</b>	3/4" MNPT In/Out
<b>Shipping Size and Weight:</b>	1 box. 24x20x9 inches, 30 lbs / 13.7 kg

Specifications subject to change

## Optional Features

This system comes by default with filtration and ultra-violet disinfection for the treatment of drinking water from many sources. Additional features can easily be added to make it into a customized water purification system for any kind of application and for the removal/reduction of almost any kind of contaminant.

**Hardness** - This system works well in cooperation with a commercial style softener, but for those applications where salt is not wanted, an electronic scale deposit controller can be added to the panel. The device will condition the calcium and magnesium molecules, preventing lime build-up in plumbing and appliances.



**Monitoring System** - For those applications that require fail-safe operation, a monitoring system can be added. This involves adding a viewport to the sterilizer in which a sensor that measures the intensity of the UV light in realtime is installed. The intensity is displayed on a monitor. In case it drops below the recommended dosage for drinking water, the monitor can trigger a solenoid valve (to be installed sparate) to shut off the flow of water until the problem has been rectified.

**UV Monitor**  
(Part # 4-UV/MS-1/2 V3)



**Special Filtration** - If other contaminants are present, such as Arsenic, Fluoride, Nitrate or other pollutants, or if the pH needs to be adjusted, additional filtration levels can easily be added to this system.

## Plug & Play

This Integrated UV System is pre-assembled and pressure tested at the factory and will work right out of the box. The sturdy stainless-steel construction and the attractive panel-mounted design allow for easy installation and ensure many years of faithful service. All components are placed so they can be easily maintained and cleaned.